



## Request for Proposals (RFP)

---

---

### School Behavioral Health

### Full Service Schools

### Deadline for Proposals:

**March 14, 2025 at 5 p.m. EST**

All proposals must be submitted using Foundant, [our online grants portal](#) (View detailed instructions on how to access the portal on page 23). The deadline to submit the application is March 14, 2025 at 5 p.m. EST. Proposals will be reviewed and qualified applicants will be notified no later than April 28, 2025.



**Funding for this RFP is made possible by Duval County Public Schools, City of Jacksonville via Kids Hope Alliance, Lucy Gooding Charitable Foundation Trust and United Way of Northeast Florida.**

**United Way Vision:** We envision a community of opportunity where everyone has hope and can reach their full potential.

**United Way Mission:** Solve our community's toughest challenges by connecting people, resources and ideas.

## **INTRODUCTION**

### **HISTORY AND BACKGROUND OF UNITED WAY OF NORTHEAST FLORIDA AND FULL SERVICE SCHOOLS OF JACKSONVILLE**

United Way of Northeast Florida is one of the oldest United Ways in the state of Florida. Since its inception 101 years ago, United Way has focused on changing lives for the better. What began in 1924 when 1,000 Duval County citizens assembled in downtown Jacksonville to help care for vulnerable fellow citizens is now a regional movement involving people from all walks of life in Baker, Clay, Duval, Nassau and northern St. Johns counties. While our strategies have changed over the years, our commitment has not.

We recognize to have lasting, more targeted impact, we need to address the underlying causes of issues, rather than their symptoms, and to coordinate resources in collaboration with community partners. After extensive analysis and research, it is clear that helping students in need of mental and behavioral health services is a critical issue for Northeast Florida.

Full Service Schools of Jacksonville is a collaborative partnership between Duval County Public Schools, City of Jacksonville via Kids Hope Alliance, Duval County Health Department, Ascension St. Vincent's Mobile Health, Lucy Gooding Charitable Foundation Trust, Baptist Health/Wolfson Children's Hospital and United Way of Northeast Florida to serve the therapeutic, health and social service needs of at-risk students and families in Duval County. This neighborhood-governed funding and service collaboration works to remove non-academic barriers to student learning and to support family success.

The Full Service school movement originated in the early 1970's, to address holistically the myriad of social issues that impact impoverished and at-risk children through the central coordination of services within the school systems. Formalized in 1974 with the federal Community Schools Act, the first statewide initiative was launched in 1987 with the purpose to integrate a range of services in one central location at, or near, schools. The vision was a "one-stop shop" that removes the barriers that young people face in accessing needed social

services. In 1990, the Florida legislature passed the Full-Service School Act calling for an integration of multiple services (health, social services, extended learning programs, etc.) in convenient locations to ensure children and youth received the necessary physical, emotional and educational supports for optimal learning and to foster a lateral coordination of service delivery to children and families among schools and local agencies.

In 1991, the first Full Service School was developed in the Greater Springfield neighborhood. Since then, the collaborative has grown over the past thirty (34) years to seven (7) additional targeted neighborhoods in Duval County - Arlington, Englewood, Historic James Weldon Johnson, Ribault, Sandalwood, Westside, and the Beaches. Comprehensive services are now available to one hundred fifty-one (151) Duval County Public Schools (19 high schools, 23 middle schools, 98 elementary schools, 4 exceptional schools, 2 K-8 schools, 1 virtual school, and 4 alternative schools), with over 100,000 Duval County Public School students eligible for assistance. Duval County Public Charter Schools are also able to opt into the Full Service Schools Model for mental and behavioral health support. The Full Service Schools offices are located on school property in each of the eight (8) neighborhoods. The Full Service Schools network of Providers offer access to therapists, psychologists, nurses, substance abuse counselors, and other professionals. Services such as counseling, family therapy, behavior management, substance abuse counseling, parenting development, medical treatment and follow-up, psychological testing, and legal consultation are provided and referrals to outside agencies are also made. The Full Service Schools model minimizes transportation barriers because services are delivered within the neighborhood and schools.

## **NOTICE OF REQUEST FOR PROPOSALS**

On February 10, 2025, United Way of Northeast Florida is launching an RFP for Full Service Schools Mental and Behavioral Health Services, to implement and deliver therapeutic services that will promote positive mental health and social-emotional outcomes for students in Duval County Public Schools. Providers funded through this RFP will offer mental health therapy and support services to Duval County Public Schools students primarily on school campuses, with alternative options available in the community and virtually.

### **AVAILABLE FUNDING**

The total amount of funding for this RFP will not exceed \$5,402,000, and the Providers selected for funding shall support all Duval County Public Schools and participating Charter Schools. It is expected that Providers will identify additional resources in the form of Medicaid billing, private insurance billing, interns, partnerships, etc. to contribute to the successful implementation of the services included in the RFP. Providers will be expected to describe how they will operationalize these additional resources in their service delivery. United Way will award one (1) contract for all therapeutic and behavioral services per Full Service School feeder pattern rather than a variety of Providers per feeder pattern. A maximum of three (3) feeder patterns can be awarded per agency. A breakdown of the feeder patterns is included in **Exhibit 1**. Regardless of

a Provider's score or breadth of proposed services, if awarded funds from United Way, a Provider must begin the contracting process, which may include reframing the proposed scope of services, adjusting the budget, or any other changes necessary to comply with the requirements of this RFP and the final contract.

### **ELIGIBLE PROVIDERS**

Eligible Providers may be governmental entities, for-profit and not-for-profit organizations. Providers should be currently qualified to conduct business in the State of Florida, under the laws of Florida per Chapter 607; F.S., and must be qualified to conduct business on or before the service and contract start date(s). Eligible Providers must remain qualified to conduct business in the State of Florida for the duration of their service award. All Providers must be Medicaid Providers, have been in existence for a minimum of 3 years, have expertise of adolescence mental and behavioral health, awareness of community, strong understanding of the social service landscape and deep knowledge of and relationship with Duval County Public Schools. All Providers must comply with the standards set forth by the Council on Accreditation (COA) or by the Commission on Accreditation of Rehabilitation Facilities (CARF).

No Provider may apply, directly or indirectly, through any agent, affiliate, or other individual or entity. Any such proposal for funding will be considered non-compliant for this competitive RFP and will be ineligible for funding whenever such determination is made during the contract processes. The Provider submitting the proposal must be the entity that intends to provide the proposed service(s) and the proposal may include subcontracted agreements. The eligible Provider must manage the proposed budget for which funding is sought. If the eligible Provider is a subsidiary of another entity, the relationship should be disclosed.

### **SERVICE DATES**

The anticipated start date for successfully negotiated contracts awarded through this RFP is July 1, 2025. The initial contract term will be effective July 1, 2025 through June 30, 2026.

The standard contract term is 12 months. Contracts awarded as part of this RFP may be renewed for three (3) additional twelve-month terms for a total of four (4) years of funding, July 2025 through June 2029. The option to renew the contract each year shall be at the sole discretion of United Way.

Subsequent renewal periods may be subject to renegotiated activity requirements, performance measures, and contractual terms and are contingent upon acceptable performance and availability of funds. The funding of service contracts awarded because of this RFP is expressly contingent upon the renewal of annual contracts between United Way, City of Jacksonville via Kids Hope Alliance, Duval County Public Schools and Lucy Gooding Charitable Foundation Trust at a funding rate sufficient to support the awarded service contracts is United Way's sole discretion.

## **REQUEST FOR PROPOSALS TIMETABLE**

All dates set forth below are subject to change by United Way in its sole discretion.

<b>Event</b>	<b>Date/Due Date</b>
Release of RFP	<b>February 10, 2025 – March 14, 2025</b>
RFP Information Sessions #1	<b>February 13, 2025 – 9:00 a.m. – 10:00 a.m. EST*</b>
RFP Information Sessions #2	<b>February 18, 2025 – 3:00 p.m. – 4:00 p.m. EST*</b>
Deadline to Submit Application	<b>March 14, 2025 by 5 p.m. EST</b>
Project Date	<b>July 1, 2025 - June 30, 2029</b>

\* United Way of Northeast Florida  
(Via TEAMS)

**REMAINDER OF PAGE INTENTIONALLY LEFT BLANK)**

## OVERVIEW OF SERVICES

The overall purpose of Full Service Schools Mental and Behavioral Health services is to decrease the symptoms of behavioral problems, to address and remove the non-academic barriers to student and family success; while increasing a child's ability to function in school, at home and in the community through a solution-focused, brief cognitive behavioral therapy or another short-term, evidence-based or promising practice. Full Service Schools are staffed with one (1) program coordinator and one (1) administrative assistant provided by United Way, one (1) intake social worker provided by Duval County Public Schools, and direct service personnel (therapists, counselors etc.) funded by multiple Partners.

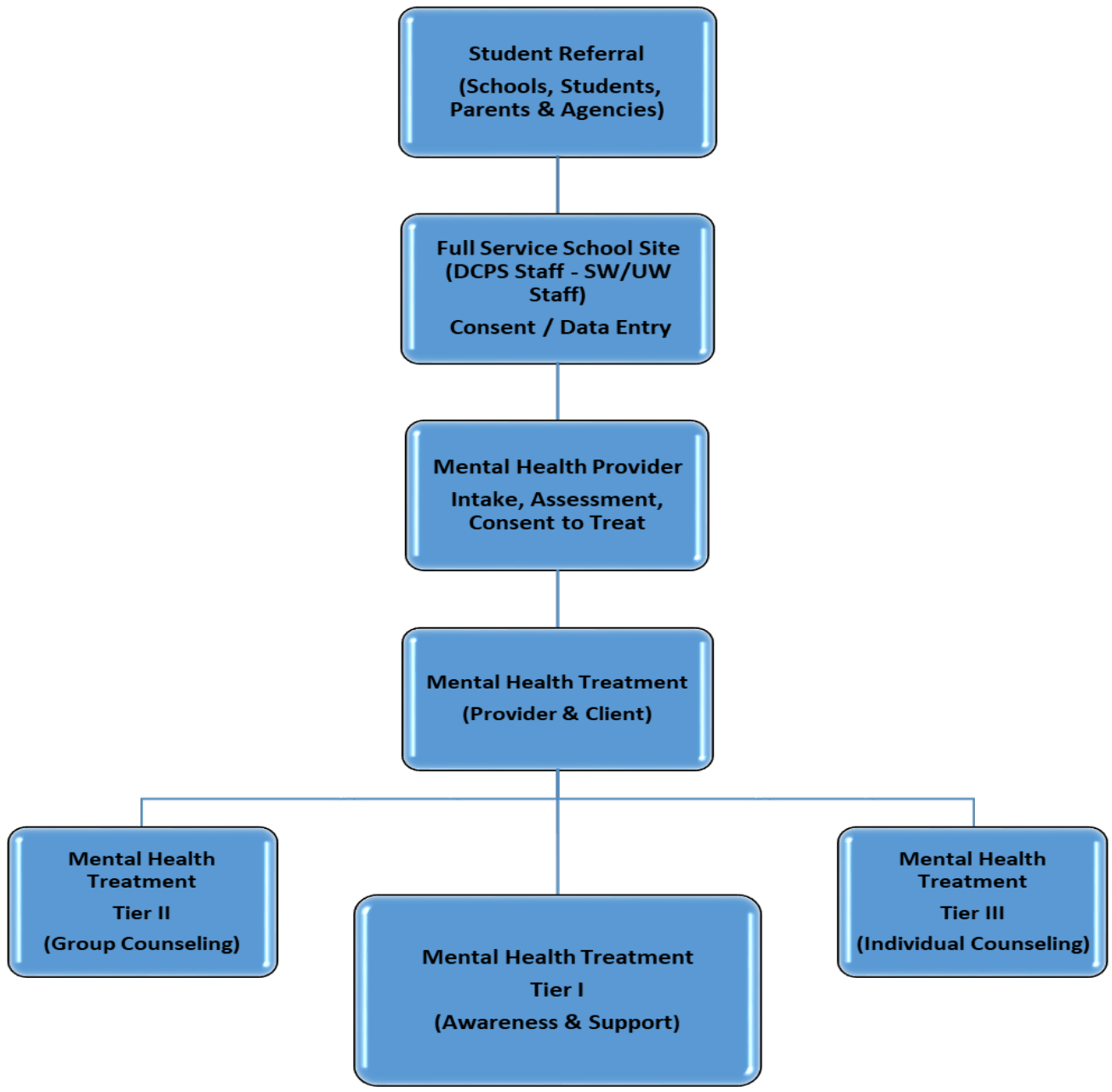
Providers are expected to explain therapeutic and behavioral service approaches used for elementary school students, middle school students, and high school students. United Way understands that offering group therapy can be challenging but that Duval County Public Schools administration will work with Full Service Schools to make this a feasible therapeutic option.

Many barriers prevent the successful engagement of clients in mental and behavioral health treatment. Therefore, Providers involved with students and families must work together to ensure that clients understand the treatment available and its value so that they can make an informed choice regarding their willingness to engage. Strategies for engagement may differ depending on the client.

We encourage flexibility in program design and implementation to enable Providers to best meet the needs and interests of students and their families. *United Way is looking for creative and innovative solutions to meet the needs of students and families served by Full Service Schools. More details regarding service length, caseloads, and revenue maximization are outlined in depth within the RFP. These requirements are in place to reduce wait lists for mental health services and to serve as many students as possible.*

**(REMAINDER OF PAGE INTENTIONALLY LEFT BLANK)**

# FULL SERVICE SCHOOLS SERVICE MODEL



## CORE PROGRAMMATIC REQUIREMENTS

### SYSTEM OF CARE CORE VALUES AND PRINCIPLES

System of care is an organizational framework that involves collaboration across agencies, families, and youth for the purpose of improving access and expanding the array of community-based, culturally and linguistically competent services and supports for children and youth with emotional, mental, or behavioral challenges and their families. The values and core principles of Systems of Care indicate that programs serving children, youth and families will be family-driven, youth-guided and culturally and linguistically competent. Programs that are *family-driven* recognize that families have a primary role in the care of their children. *Youth-guided* programs create safe environments that give young people a voice in the care of their own treatment and *cultural and linguistic competence* is defined as the capacity of an organization to provide services that are respectful and responsive to cultural differences such as ethnicity, sex, religion, age, language proficiency, etc.

### CORE TRAINING REQUIREMENTS

#### Trust Based Relational Intervention

TBRI® is a care model designed to empower adults to meet relational and developmental needs of children impacted by trauma. Developed by Drs. Karyn Purvis and David Cross at the Institute of Child Development at TCU. Connection & authentic relationships are at the core of TBRI®. TBRI® provides parents/caregivers, teachers, faith leaders, professionals and ALL who serve children and their families with insight and practical tools to help children in their care reach their highest potential. The three TBRI® Principles are *Connecting*: Create connections that disarm fear, gain trust, and enhance learning. *Empowering*: Strengthen learning and regulation by meeting a child's physical and environmental needs. *Correcting*: Shape beliefs and behaviors effectively, so children feel safe, protected, and empowered.

#### Youth Mental Health First Aid

Youth Mental Health First Aid is a skills-based training program which introduce parents, family members, caregivers, teachers, school staff, peers, neighbors and health and human services workers and any other citizen how to identify, understand and respond to an adolescent (ages 12-18) who may be experiencing a mental health or substance use challenge. Youth Mental Health First Aid allow participants to learn how to support a youth developing signs and symptoms of a mental illness or in an emotional crisis by applying a core five-step action plan: assess for risk of suicide or harm, listen nonjudgmentally, give reassurance and information, encourage appropriate professional help, encourage self-help and other support strategies.

#### LivingWorks ASIST

LivingWorks ASIST is a two-day interactive workshop in suicide first-aid. It teaches participants to recognize when someone may have thoughts of suicide and work with them to create a plan that will support their immediate safety.



Providers are required to complete the above-mentioned trainings and will be asked to demonstrate how they intend to implement System of Care core values and principles into their service delivery.

## **TARGETED POPULATION**

The targeted population includes Duval County Public School students who are referred to Full Service Schools via self-referral, parent, teacher, school official, or community agency as needing mental or behavioral health intervention to address issues related to depression, stress and trauma, anger management/domestic violence, child abuse/neglect, parent/child bonding, attachment, emotional competence and other issues. The targeted population also includes students that have been Baker Acted or referred to the Duval County Public School's Threat Assessment Team. The interventions can be delivered individually, in a group setting, or with the student's family. Providers are responsible for researching the needs of the Full Service Schools feeder pattern(s) they are applying for and describing how they intend to meet the requests of the communities served. Proposals should have a separate needs assessment for each feeder pattern proposed.

NOTE: This RFP is soliciting proposals for the following eight (8) Duval County Public School feeder patterns: Greater Springfield, Arlington, Englewood, Historic James Weldon Johnson, Sandalwood, Ribault, Westside and the Beaches (**See Exhibit 2**).

## **SERVICE LOCATIONS**

Because the vision of Full Service Schools is to integrate a range of services in one central location at, or near schools and remove the barriers that young people face in accessing needed social services, most of the services should take place in a Full Service Schools hub or feeder school. Services can also take place in the community, in a family's home or via a telehealth platform when applicable and/or preferred).

## **FREQUENCY AND DURATION OF SERVICES**

Students in need of services are referred to Full Service Schools and an assessment is completed by the Duval County Public Schools social workers to determine the most appropriate service required for the problems presented. As determined by the assessment, the Duval County Public Schools social workers will refer students to mental and behavioral health therapy within the Full Service Schools. The Provider will then determine whether the Full Service Schools model of services are the best treatment format to meet the needs of the student. If the presenting problems likely require extensive treatment services (longer than six months), the service Provider will decline the referral and provide feedback to the Duval County Public Schools social worker to refer the family to another appropriate outpatient mental health and behavioral service in the community. It is the intent of the program that students will be served up to six (6) months, with an additional 30-day transition period, if needed. Service time beyond six (6) months will be considered on a case-by-case basis, upon case committee review (made up of a representative from DCPS, KHA and United Way).

Services are expected to continue throughout the year, over the summer and when students are not attending brick and mortar settings (Winter Break, Spring Break, emergency closures, etc.).

Providers are expected to conduct visits in the community, in a family's home or via a telehealth platform to serve students and families in the above circumstances.

**NOTE: Students who have successfully completed treatment and are referred to Full Service Schools more than once within a school year, will be referred out to a community provider for additional mental health support.**

### **SERVICE COMPONENTS**

Providers will provide solution-focused, brief cognitive behavioral therapy or another short, evidence-based or promising practice. Providers will be expected to provide age appropriate therapeutic and behavioral service approaches for elementary school students, middle school students, and high school students. United Way understands that offering group therapy can be challenging but that the Duval County Public Schools administration will work with Full-Service Schools to make this a feasible therapeutic option.

### **CASELOADS**

Providers are expected to maintain a minimum active caseload of 30 students for individual therapy, with an expectation of each therapist serving 60 total students for the contractual year. Providers are encouraged to conduct group counseling to support additional students above/beyond their 30 individual therapy caseloads.

### **STAFFING REQUIREMENTS**

To effectively meet the needs of individual families and children while delivering the program, the Provider must describe the efforts they will take to:

1. Hire highly qualified staff (e.g., training, education, skills and experience acquired).
2. Hire staff that is culturally competent and multi-lingual that reflect the community they will be serving.
3. Ensure a System of Care that provides for the delivery of mental health services to youth and families that are culturally and linguistically competent and are youth-guided and family-driven.

United Way will coordinate with Kids Hope Alliance, Duval County Public Schools and other partners for staff training resource needs to ensure that all Full Service Schools staff/providers have the appropriate training to provide services that will be delivered in such a manner as to eliminate cultural, linguistic, economic, geographical and other barriers that may impede a family's success (i.e., TBRI, YMHFA & LivingWorks ASIST Training). In addition, services will be solutions-based and driven by the needs and desires of the youth and family.

Providers will be responsible for proposing a staffing pattern appropriate for the needs of the feeder pattern(s) and services proposed. Staff must be open to continuous growth and learning as professionals. Hiring staff that best fit this model of services is critical to the success of the Providers in achieving positive outcomes. Staff may include the following positions with the appropriate qualifications as follows:

<b>Position Title</b>	<b>Minimum Qualifications</b>
Mental Health Supervisor	<p>Master's degree from an accredited college or university in mental health counseling, social work or marriage/family counseling and be licensed (LMHC, LCSW or LMFT) in the State of Florida.</p> <p>Must have at least 5 years of experience providing clinical services to at-risk populations.</p>
Mental Health Therapist	<p>Master's degree from an accredited college or university in mental health counseling, social work or marriage/family counseling and be a registered intern or licensed with the State of Florida.</p> <p>Registered intern or licensure requirements pertain to any newly hired Full Service School Therapists*</p>

Providers are required to meet the ratio of not more than fifteen (15) therapists to one (1) Licensed Mental Health Supervisor.

Staffing requirements shall comply with the standards set forth by the Council on Accreditation (COA) or by the Commission on Accreditation of Rehabilitation Facilities (CARF).

### **CHART DOCUMENTATION**

Client records must include program consent(s), demographic information, referral source, presenting problem, financial eligibility (Medicaid, private insurance, none), individual with primary responsibility for treatment, screening and assessment information, service plan, progress notes, medication profile, release of confidential information, discharge reports, treatment plans, parent and teacher contact, and outcome measures.

### **PROGRAM MONITORING, DATA COLLECTION, AND EVALUATION**

Participation in evaluation of funded programs is required by United Way. Evaluation is an important tool for learning how a Provider is performing and for developing ways to improve program services and outcomes. Evaluation does not only include rigorous, scientific evaluation of the program's impact but also assessing in order to ensure quality and guide improvement. Providers may be assessed and monitored regularly to ensure fidelity to the therapy model of Full Service Schools. The Provider selected for funding will be required to participate in both process and outcome evaluations.

Providers will be required to collect and enter ongoing data for all clients referred to Full Service Schools regardless of payer source. Data will be used for decision making and evaluating outcomes. Provider(s) will enter specific data into the Services and Activities Management Information System (SAMIS) irrespective of any other data collection processes a Provider uses. The Provider is responsible for documenting in SAMIS in a timely manner all

activity codes, assessment scores, and other required information as stipulated in the contract. United Way will coordinate SAMIS training.

Current plans for mental health outcomes and outcome measures include the following:

- Children's Functional Assessment Rating Scale (CFARS) pre-post
- Parent/Student satisfaction surveys
- Principal/Administration satisfaction surveys
- Attendance, Behavior and Promotion
- Students Served/Units of Service

United Way may require additional measures and/or selected measures may change.

### **CROSS PROGRAM COLLABORATION AND COMMUNITY PARTNERSHIPS**

In support of the mission of United Way, value is placed on collaboration among community organizations. Across all initiatives, the cross-collaborative strategies are intended to build upon established relationships and create new relationships with community organizations that support a variety of needs of children and family participants. It is within this context that United Way expects Providers to propose services and funded programs to serve as gateways to other needed services that are not directly provided by the primary Provider. United Way expects successful Providers to clearly demonstrate that a proposed service and programming structure is not being performed in isolation; but rather, that the service is connected to and integrated with the Provider's community in light of existing programs, initiatives, systems of care and identified community needs.

Whenever appropriate, Providers are encouraged to establish and maintain local, integrated and collaborative partnerships with other services/programs funded by United Way of Northeast Florida, Duval County Public Schools, Kids Hope Alliance, and other organizations. These community partnerships may provide for the use of other in-kind resources. Proposed collaborations with other organizations are expected to demonstrate opportunities for sharing services and data, which adds value to the proposed programming structure, such as referral sources and follow-up for needed services which are not provided directly by the Provider.

## **FISCAL PROGRAMMATIC REQUIREMENTS**

### **OVERVIEW**

All Providers must utilize SAMIS or a United Way platform for fiscal invoicing. Technical assistance will be coordinated through United Way and Kids Hope Alliance

Supporting documentation for expenditures is required for all funding methods. Examples of such documentation include, but are not limited to payroll records, contracts, invoices with check numbers verifying payment, and/or bank statements; all or any of which must be submitted with payment request.

Failure to submit fiscal reports in the time frame stipulated in the contract renders the project out of compliance and may result in early termination and ineligibility for future funding.

### **FUNDING FOR TREATMENTS WITHOUT A DIAGNOSIS**

It is not the intent of United Way to withhold services because a student does not have an official mental health diagnosis covered by insurance. In these instances, United Way will be the funder of last resort. However, if a revenue source exists for any service, it is the intent of United Way that the Provider bills the appropriate revenue source.

### **PROGRAM INCOME**

Providers are expected to report Medicaid and third-party insurance revenues as the total cost of the program. Quarterly Medicaid and insurance revenues received from Full Service Schools will be reported to United Way. Providers are required to bill Medicaid when applicable, for students eligible to receive this form of payment coverage. Providers are expected to bill Medicaid at a minimum of 10% of their total contracted amount.

### **METHODS OF PAYMENT**

All payments are based on compliance with the terms of the contract. United Way uses a cost reimbursement method of payment for direct services to children and families. A cost reimbursement contract will provide for reimbursement of actual costs paid, but not costs accrued, as supported by Provider invoices reflecting services delivered in accordance with the signed agreement and approved budget. Requests for reimbursement with the appropriate backup documentation must be submitted. Examples of such documentation include, but are not limited to: payroll records, timesheets, contracts, invoices with service dates and student attendance, check numbers verifying payment and/or bank statements, as well as evidence of activities that meet specified performance objectives.

Units of service and expected work products, if applicable, will be monitored, and the contract award amount may be adjusted if performance is below contract requirements. Payment is contingent upon submittal of complete and accurate data in accordance with United Way contract requirements.

### **ALLOWABLE EXPENSES**

Program funds must be used for activities that directly support the accomplishment of the project purpose, priorities and expected outcomes. All expenditures must be consistent with the approved budget, as well as applicable state and federal laws, regulations and guidance. Any requested budget amendments must be approved in advance.

### **RECORDS RETENTION**

It is the responsibility of the Provider to retain records for financial transactions and supporting documentation for auditing purposes. Records requested by United Way must be provided. Records should be maintained for six (6) years from the last day of the program or longer if there is an ongoing investigation or audit.

### **ADMINISTRATIVE/INDIRECT COSTS**

Administrative/Indirect costs represent the general overhead expenses necessary to operate a program and typically relate to the organization's general executive and administrative functions. For example, a receptionist that answers incoming calls of an organization and general liability insurance are considered administrative/ indirect costs.

Administrative/ indirect costs cannot exceed ten percent (10%) of the Provider's requested funding. The 10% threshold also includes administrative/indirect costs paid to subcontractors and partner agencies.

## **LEGAL REQUIREMENTS**

### **BACKGROUND SCREENING**

1. The Provider shall screen all Covered Persons (as defined below) using the Level 2 screening standards set forth in Section 435.04 of Florida Statutes ("Level 2 Screening"). Provider shall require Level 2 Screening as a condition of employment and continued employment of all Covered Persons. Level 2 Screening must be complete and current before an individual begins any work for Provider which may result in the individual being considered a Covered Person. To be considered "current," a Level 2 Screening must have been completed for the Covered Person within the last 5 years.
2. A "Covered Person" for the purposes of this Agreement means a person who is an owner, operator, program director, full or part-time employee, temporary employee, independent contractor, intern or volunteer who may come into contact with any child or developmentally disabled person receiving services under the Programs or a person who may have access to or control Program funds.
3. Provider shall repeat the Level 2 Screening at least every 5 years from the date of Provider's initial Level 2 screening or re-screening.
4. The Provider shall ensure compliance by all subcontractors with the above screening requirements, as to Covered Persons of the subcontractors.
5. At least annually, Provider shall submit to United Way a signed affidavit declaring that:
  - a. A Level 2 Screening has been completed for all Covered Persons (as defined in its contract with United Way of Northeast Florida) and for all persons who were Covered Persons at any time during the prior year, unless such person is a minor and the Provider has screened the individual using the DCF's Affidavit of Good Moral Character;
  - b. Provider has repeated a Level 2 Screening of all Covered Persons at least every 5 years as required by its contract with United Way;
  - c. Attached is a true, correct and complete list of all of Covered Persons (including all individuals who were Covered Persons at any time during the prior year) showing the date on which the Level 2 Screening was completed;
  - d. Within 10 days prior to the date of the affidavit, Provider has conducted a Florida Department of Law Enforcement Career Offender Search and a national search on the Dru Sjodin National Sex Offender Website maintained by the U.S. Department of Justice, and that no Covered Person was listed on such sites as a career offender

- or a sex offender; and
- e. Provider has complied in every respect with the requirements of this Section 2.6.1, to its contract with United Way.
6. Provider operates its Programs at Duval County Public Schools all Covered Persons must comply with all Duval County Public School requirements, policies and procedures for fingerprinting and background screening. In addition, Covered Persons will comply with all Duval County Public Schools training requirement including Know the Line—Line of Sight.

**Payment of United Way Funds under this Agreement shall be conditioned on the Provider adhering to the requirements of this Section 2.6.1. A breach by Provider of the requirements of this Section 2.6.1 during the Agreement term shall constitute a material breach of this Agreement and cause for United Way to immediately terminate this Agreement.**

**The Provider agrees to require all its affected employees to sign a statement, as a condition of employment with the Provider in relation to performance under this Agreement, agreeing that the employee will abide by the heretofore described background screening requirements, and also agreeing that the employee will notify the Provider of any arrest(s) or conviction(s) of any offense within 48 hours of its occurrence.**

**The Provider agrees to promptly provide United Way with a list of all its employees who have completed background screening as required by the above-referenced statutes and who meet the statutory requirements contained therein. The Provider agrees that it has an ongoing duty to maintain and update these lists as new employees are hired and in the event that any previously screened employee fails to meet the statutory standards. Provider further agrees to notify United Way immediately upon becoming aware that one of its employees who was previously certified as completing the background check and meeting the statutory standards is subsequently arrested or convicted of any disqualifying offense. Failure by Provider to notify United Way of such arrest or conviction within 48 hours of being put on notice and within five (5) business days of the occurrence of qualifying arrest or conviction, shall constitute grounds for immediate termination of this Agreement.**

**The parties further agree that failure by the Provider to perform any of the duties described in this section shall constitute a material breach of the Agreement entitling United Way to terminate this Agreement immediately with no further responsibility to make payment or perform any other duties under this Agreement.**

## INDEMNIFICATION

To the extent permitted by, and as limited by Section 768.28, Florida Statutes, Provider shall hold harmless, indemnify, and defend United Way of Northeast Florida, Duval County Public Schools and Kids Hope Alliance / City of Jacksonville (COJ) its members, officers, officials, employees and agents (collectively the "Indemnified Parties") from and against, without limitation, any and all claims, suits, actions, losses, damages, injuries, liabilities, fines, penalties, costs and expenses of whatsoever kind or nature, which may be incurred by, charged to or recovered from any of the foregoing Indemnified Parties for:

(a) General Tort Liability, for any negligent act, error or omission, recklessness or intentionally wrongful conduct on the part of the Indemnifying Parties that causes injury (whether mental or corporeal) to persons (including death) or damage to property, whether arising out of or incidental to the Indemnifying Parties' performance of this Contract, operations, services or work performed hereunder; and

(b) Violation of Laws Liability, arising from or based upon the violation of any federal, state, or municipal laws, statutes, resolutions, rules or regulations, by the Indemnifying Parties or those under their control; and

(c) Breach of Representations, Warranties and Obligations, arising directly or indirectly out of any breach of any representation, warranty, covenant or obligation set forth in the Contract or made by the Indemnifying Parties in connection with the Contract or in any certificate, document, writing or other instrument delivered by the Indemnifying Party; and

(d) Environmental Liability, to the extent this Contract contemplates environmental exposures, arising from or in connection with any environmental, health and safety liabilities, claims, citations, clean-up or damages whether arising out of or relating to the operation or other activities performed in connection with this Contract; and

(e) Intellectual Property Liability, to the extent this Contract contemplates intellectual property exposures, arising directly or indirectly out of any allegation that the Services, any product generated by the Services, or any part of the Services as contemplated in this Contract, constitutes an infringement of any copyright, patent, trade secret or any other intellectual property right. If in any suit or proceeding, the Services, or any product generated by the Services, is held to constitute an infringement and its use is permanently enjoined, the Indemnifying Parties shall, immediately, make every reasonable effort to secure within 60 days, for the Indemnified Parties a license, authorizing the continued use of the Service or product. If the Indemnifying Parties fail to secure such a license for the Indemnified Parties, then the Indemnifying Parties shall replace the Service or product with a non-infringing Service or product or modify such Service or product in a way satisfactory to Buyer, so that the Service or product is non-infringing.

If an Indemnifying Party exercises its rights under this Contract, the Indemnifying Party will (1) provide reasonable notice to the Indemnified Parties of the applicable claim or liability, and (2) allow Indemnified Parties, at their own expense, to participate in the litigation of such claim or liability to protect their interests. **The scope and terms of the indemnity obligations herein described are separate and apart from, and shall not be limited by any insurance provided pursuant to this Contract or otherwise. Such terms of indemnity shall survive the expiration or termination of this Contract.**



In the event that any portion of the scope or terms of this indemnity is in derogation of Section 725.06 or 725.08 of the Florida Statutes, all other terms of this indemnity shall remain in full force and effect. Further, any term which offends Section 725.06 or 725.08 of the Florida Statutes will be modified to comply with said statutes.

**INSURANCE**

Without limiting its liability under this Contract, Provider shall at all times during the term of this Contract procure prior to commencement of work and maintain at its sole expense during the life of this Contract (and Provider shall require its subcontractors, laborers, materialmen and suppliers to provide, as applicable), insurance of the types and limits not less than amounts stated below, and prior to work commencement provide a certificate with applicable endorsements on a form that is acceptable by United Way of Northeast Florida, Kids Hope Alliance (COJ) and Duval County Public Schools evidencing the following required coverages:

<b>Schedule</b>	<b>Limits</b>
<b>Worker’s Compensation/Employers Liability</b>	
Worker’s Compensation	Florida Statutory Coverage
Employer’s Liability	\$1,000,000 Each Accident
	\$1,000,000 Disease Policy Limit
	\$1,000,000 Each Employee/Disease
<p>This insurance shall cover the Provider (and to the extent its subcontractors of any tier are not otherwise insured, its subcontractors of any tier) for those sources of liability which would be covered by the latest edition of the standard Workers’ Compensation policy, as filed for use in the State of Florida by the National Council on Compensation Insurance (NCCI), without any restrictive endorsements other than the Florida Employers Liability Coverage Endorsement (NCCI Form WC 09 03), those which are required by the State of Florida, or any restrictive NCCI endorsements which, under an NCCI filing, must be attached to the policy (i.e., mandatory endorsements). In addition to coverage for the Florida Workers’ Compensation Act, where appropriate, coverage is to be included for the Federal Employers’ Liability Act, USL&amp;H and Jones, and any other applicable federal or state law.</p>	
<b>Commercial General Liability</b>	
	\$2,000,000 General Aggregate
	\$2,000,000 Products & Completed Ops
	Aggregate
	\$1,000,000 Personal/Advertising Injury
	\$1,000,000 Each Occurrence
	\$ 50,000 Fire Damage
	\$ 5,000 Medical Expenses

Such insurance shall be no more restrictive than that provided by the most recent version of the standard Commercial General Liability Form (ISO Form CG 00 01) as filed for use in the State of Florida without any restrictive endorsements other than those approved by United Way, Kids Hope Alliance (COJ) and Duval County Public Schools. An Excess Liability policy or Umbrella policy can be used to satisfy the above limits.

**Automobile Liability**

\$1,000,000 Each Occurrence – Bodily Injury and Property Damage Combined

(Coverage for all automobiles, owned, hired or non-owned used in performance of the Services)

Such insurance shall be no more restrictive than that provided by the most recent version of the standard Business Auto Coverage Form (ISO Form CA0001) as filed for use in the State of Florida without any restrictive endorsements other than those which are required by the State of Florida, or equivalent manuscript form, must be attached to the policy equivalent endorsement as filed with ISO (i.e., mandatory endorsement).

**Medical Malpractice**

**\$1,000,000 Per Claim and Aggregate**

(To the extent Medical Services and Prescriptions are being dispensed by a non-governmental entity.)

Such insurance shall be on a form acceptable to United Way, Kids Hope Alliance (COJ) and Duval County Public Schools, and shall cover for those sources of liability arising out of the rendering or failure to render the services required in this Contract. Such coverage must be provided on an Occurrence Form or, if on a Claims Made Form, the retroactive date must be no later than the first date of this Contract and such claims-made coverage must respond to all claims reported within three years following the period for which coverage is required and which would have been covered had the coverage been on an occurrence basis.

**Professional Liability**

\$1,000,000 Per Claim  
\$2,000,000 Aggregate

(To the extent counseling services are being rendered by a non-governmental entity.)

Such insurance shall be on a form acceptable by United Way, Kids Hope Alliance (COJ) and Duval County Public Schools, and shall cover for those sources of liability arising out of the rendering or failure to render the services required in this Contract. Such coverage must be provided on an Occurrence Form or, if on a Claims Made Form, the retroactive date must be no later than the first date of this Contract and such claims-made coverage must respond to all claims reported within three years following the period for which coverage is required and which would have been covered had the coverage been on an occurrence basis.

**Sexual Molestation**

\$1,000,000 Per Claim  
\$2,000,000 Aggregate

Sexual Molestation Liability coverage will be provided on an Occurrence Form or a Claims Made Form with a retroactive date to at least the first date of this Contract. If provided on a Claim Made Form, - the coverages must respond to all claims reported within three years following the period for which coverage is required and which would have been covered had the coverage been on an occurrence basis.

A. Waiver of Subrogation. All required insurance policies shall be endorsed to provide for a waiver of underwriter’s rights of subrogation in favor of United Way, Kids Hope Alliance (COJ),

Duval County Public Schools and their respective members, officials, officers' employees and agents.

- B. Additional Insured: All insurance policies except Worker's Compensation, Professional Liability and AD&D shall be endorsed to name United Way, Kids Hope Alliance (COJ), Duval County Public Schools and their respective members, officials, officers, employees and agents. Additional Insured for General Liability shall be in a form no more restrictive than CG2010 and CG2037, Automobile Liability CA2048.
- C. Provider's Insurance Primary. The insurance provided by Provider for shall apply on a primary basis to, and shall not require contribution from, any other insurance or self-insurance maintained by United Way, Kids Hope Alliance (COJ), Duval County Public Schools and their respective members, officials, officers' employees and agents.
- D. Deductible or Self-Insured Retention Provisions. All deductibles and self-insured retentions associated with coverages required for compliance with this Contract shall remain the sole and exclusive responsibility of the named insured Provider. Under no circumstances will United Way, Kids Hope Alliance (COJ), Duval County Public Schools and their respective members, officials, officers employees and agents be responsible for paying any deductible or self-insured retentions related to this Contract.
- E. Provider's Insurance Additional Remedy. Compliance with the insurance requirements of this Contract shall not limit the liability of the Provider or its Subcontractors, employees or agents. Any remedy provided to United Way, Kids Hope Alliance (COJ), Duval County Public Schools and their respective members, officials, officers employees and agents shall be in addition to and not in lieu of any other remedy available under this Contract or otherwise.
- F. No Waiver by City Approval/Disapproval. Neither approval by City nor failure to disapprove the insurance furnished by Provider shall relieve Provider of Provider's full responsibility to provide insurance as required under this Contract. Waiver/Estoppel. Neither approval by United Way, Kids Hope Alliance (COJ), Duval County Public Schools nor failure to disapprove the insurance furnished by Provider shall relieve Provider of Provider's full responsibility to provide insurance as required under this Contract.
- G. Certificates of Insurance. Provider shall provide United Way the Provider's Certificates of Insurance that shows the corresponding Contract Number in the Description, if known. Additional Insureds as provided above and waivers of subrogation. The certificates of insurance shall be provided to United Way's contract manager.
- H. Carrier Qualifications. The above insurance shall be written by an insurer holding a current certificate of authority pursuant to chapter 624, Florida State or a company that is declared as an approved Surplus Lines carrier under Chapter 626 Florida Statutes. Such Insurance shall be written by an insurer with an A.M. Best Rating of A- VII or better.
- I. Notice. Provider shall provide an endorsement issued by the insurer to provide United Way, Kids Hope Alliance (COJ), Duval County Public Schools and their respective members, officials, officers, employees and agents thirty (30) days prior written notice of any change in the above insurance coverage limits or cancellation, including expiration or non-renewal. If such endorsement is not available then the Provider, as applicable, shall provide said a

thirty (30) days written notice of any change in the above coverages or limits, coverage being suspended, voided, cancelled, including expiration or non-renewal.

- J. Survival. Anything to the contrary notwithstanding, the liabilities of Provider under this Contract shall survive and not be terminated, reduced or otherwise limited by any expiration or termination of insurance coverage.
- K. Additional Insurance. Depending upon the nature of any aspect of any project and its accompanying exposures and liabilities, United Way, Kids Hope Alliance (COJ), Duval County Public Schools and their respective members, officials, officers employees and agents may reasonably require additional insurance coverages in amounts responsive to those liabilities, which may or may not require that United Way, Kids Hope Alliance (COJ), Duval County Public Schools and their respective members, officials, officers employees and agents be named as an additional insured.
- L. Special Provisions: Prior to executing this Contract, Provider shall present this Contract to its Insurance Agent affirming: (1) That the Agent has personally reviewed the insurance requirements of this Contract, and (2) That the Agent is capable (has proper market access) to provide the coverages and limits of liability required on behalf of Provider.
- M. **Shall Provider fail to maintain required insurance; Provider will not be eligible for funds.**

**Notwithstanding any provision in this Contract to the contrary, the insurance requirements may be satisfied by certification of a valid program of self-insurance authorized pursuant to Section 768.28(16), Florida Statutes (which provisions are not expanded, altered or waived).**

**(REMAINDER OF PAGE INTENTIONALLY LEFT BLANK)**

**REVIEW AND SELECTION PROCESS  
EVALUATION OF PROPOSALS**

1. An Evaluation Team predetermined by United Way will review and score all proposals submitted based on the criteria stated below.
2. The Evaluation Team will make a recommendation for approval and award of the contract to the successful Provider(s).

**SELECTION CRITERIA**

The Evaluation Team will utilize the following evaluation criteria in selecting a Provider(s) to perform the services requested by the RFP.

<b>Criteria</b>	<b>Points</b>
Provider’s Experience and Capacity	10
Provider’s Ability to Deliver Evidence-Based or Promising Practice Treatment Models	15
Provider’s Ability to Provide Services that Adhere to System of Care Core Values	10
Provider’s Plan to Engage, Assess and Treat Students and Families (Part A & Part B)	20*
Provider’s Staffing, Qualifications, and Supervision	20
Program Monitoring, Evaluation, and Accountability	10
Budgetary / Financial Requirements	10
Cross Program Collaboration and Community Partners	5
<b>Total Points</b>	<b>100</b>

\*Parts A/B must be completed to receive the possible 20 Point of this section.

## RFP PROCESS

### INFORMATION SESSIONS

**Interested in learning more? Attend an information session.**

United Way will host two informational sessions in February to explain the RFP process and answer any questions you may have. Please [RSVP HERE](#) if you plan to participate in one of the upcoming virtual TEAMS sessions on:

1. February 13, 2025 – 9-10 a.m.
2. February 18, 2025 – 3-4 p.m.

### ACCEPTANCE OF PROPOSALS

**All proposals must be submitted using United Way’s online grants portal, Foundant: <https://www.grantinterface.com/Home/Logon?urlkey=uwnefl>**

**Applying with Foundant:**

1. Please click on this link to access the United Way Foundant web site: <https://www.grantinterface.com/Home/Logon?urlkey=uwnefl>
2. Take a moment to review the brief Video Tutorials.
3. Click on Create a New Account and set up your provider profile OR log in with your password if you have previously established your provider profile.
4. Once your profile is completed you will see your provider’s dashboard.
5. To see the available grant applications, click on the Apply button at the top of your dashboard.
6. Select the Mental and Behavioral Health grant by clicking the blue Apply button at the top right corner. **You will submit only one application per agency and have the option of applying for multiple sites/feeder patterns.**
7. After you submit your application, you will receive an email confirming that your application has been submitted successfully.
8. Please be certain to bookmark this web page and make a note of your password.

**The deadline to submit the application is March 14, 2025 at 5 p.m. EST. Proposals will be reviewed and qualified applicants will be notified no later than April 28, 2025**

## RFP FINAL STEPS

### LIST OF REQUIRED SUPPLEMENTAL MATERIALS

All agencies must submit the required financial documents to complete the RFP application.

- (a) Nonprofit agency must hold a current tax-exempt certificate
- (b) The agency must be registered with the State of Florida and be in good standing (Sunbiz)
- (c) Proof of Medicaid Enrollment
- (d) Certificate of Insurance
- (e) IRS Form 990 or 990-EZ, if applicable:
- (f) Financial statement requirements are based on the agency/organization's total revenue as follows:
  - Agency revenue of \$500,000 and above must submit:

Agency's 2 most recent years annual audit reports (2022/2023 or 2023/2024) prepared by an independent Certified Public Accountant (CPA) according to generally accepted accounting principles (GAAP), which includes an opinion regarding the accuracy of the agency's financial reports.
  - Agency revenue of \$250,000 to \$499,999 must submit:

An independent financial review: the most recent management inquiry (for last 2 years- 2022/2023 or 2023/2024) conducted by an independent CPA firm according to generally accepted accounting principles (GAAP)
  - Agency revenue less than \$250,000 must submit:

Financial statements done through compilation by an accountant (for last 2 years – 2022/2023 or 2023/2024) profit and loss statement for the most recently completed year)

**(REMAINDER OF PAGE INTENTIONALLY LEFT BLANK)**

## EXHIBIT 1

### Full Service Schools Feeder Pattern

Full Service School Hub	FSS <u>Minimum</u> Required Clinical Staff	Current FSS Feeder Schools Supported by Clinical Staff	Number of FSS Feeder Schools
Arlington Family Resource Center	8	17	22*
Beaches Family Resource Center	8	13	18*
Englewood Family Resource Center	6	15	22*
Greater Springfield Family Resource Center	10	21	23*
Historic James W. Johnson Family Resource Center	11	23	27*
Ribault Family Resource Center	6	15	17*
Sandalwood Family Resource Center	14	26	28*
Westside Family Resource Center	12	24	27*

**\*Numbers include currently participating Charter and Hazel Schools**

Past referral/consent data, PLUS School, Charter School and Hazel School designations were utilized in determining minimum required clinical staff (full-time therapists) and does not include clinical supervisors. These designations are subject to change each fiscal year, however, will be confirmed during the annual contracting period.

**It is expected that Providers will identify additional resources in the form of Medicaid billing, private insurance billing, interns, partnerships, etc. to contribute to the successful implementation of services included in the RFP. Providers will be expected to describe how they will operationalize these additional resources in their service delivery to serve more students and families.**

If you need assistance, please contact the United Way Grants Team:  
[unitedwaygrants@uwnefl.org](mailto:unitedwaygrants@uwnefl.org)



## EXHIBIT 2 FULL SERVICE SCHOOLS FEEDER SITE

### Arlington Family Resource Center

Campus of Terry Parker High School  
8015 Parker School Road Suite 160, Jacksonville, FL 32211 **Office:** 904-858-1955

**FSS Coordinator:** Vicki Lunsford, [vickil@uwnefl.org](mailto:vickil@uwnefl.org)

**Participating Schools:**

Arlington ES*	GRASP Academy	Parkwood Heights ES*
Arlington Heights ES*	Lake Lucina ES	San Mateo ES
Arlington MS (P)	Lone Star ES	Terry Parker HS
Don Brewer ES	Louis Sheffield ES (P)	Waterleaf ES ((P)
Fort Caroline ES*	Merrill Road ES*	Woodland Acres ES*
Fort Caroline MS (P)	New Berlin ES	

**Participating Charter Schools:** Lone Star HS  
Global Outreach HS

Seacoast Charter (K-5)  
Global Outreach Charter

Jax Classical East - Arlington

### Beaches Resource Center

Campus of Fletcher High School  
700 Seagate Avenue, Neptune Beach, FL 32266 **Office:** 904-270-8200

**FSS Coordinator:** Laura Acker, [lauraa@uwnefl.org](mailto:lauraa@uwnefl.org)

**Participating Schools:**

Anchor Academy*	Mayport ES	Duval Virtual*
Atlantic Beach ES	Mayport MS	Home School*
Chets Creek ES	Neptune Beach ES	Hospital Homebound*
Fletcher HS (P)	Sabal Palm ES	Marine Science*
Fletcher MS (P)	San Pablo ES	
J. Allen Axson ES	Seabreeze ES	
Jacksonville Beach ES*		

**Participating Charter Schools:**  
Seaside K-8 Global  
Outreach Academy Intercoastal

### Englewood Family Resource Center

Campus of Englewood High School  
5354 Betty Ann Lane, Jacksonville, FL 32207 **Office:** 904-730-6288

**FSS Coordinator:** Macy Cafiero, [macyc@uwnefl.org](mailto:macyc@uwnefl.org)

**Participating Schools:**

Alden Road	Greenfield ES*	Love Grove ES*
Alfred Dupont MS	Hendricks Avenue ES	Pine Forest SOTA*
Beaulerc ES	Hogan Spring Glen ES*	Samuel Wolfson HS
Douglas Anderson SOTA (P)	Holiday Hill ES	San Jose ES
Englewood ES*	Julia Landon MS*	Southside MS
Englewood HS (P)	Kings Trail ES*	Spring Park ES

**Participating Charter Schools:**

River City Science Innovation  
Bridge Prep Academy

River City Science Middle/High  
River City Science ES

### Greater Springfield Family Resource Center

Campus of Andrew Jackson High School  
3816 Main St., Jacksonville, FL 32206 **Office:** 904-348-7388

**FSS Coordinator:** Felicia Simmons, [felicias@uwnefl.org](mailto:felicias@uwnefl.org)

**Participating Schools:**

Jackson HS (P)	Highlands MS	North Shore ES
Andrew Robinson ES	John E. Ford	Oceanway ES
Biscayne ES	Lavilla SOTA (P)	Oceanway MS
Darnell-Cookman (P)	Long Branch ES	R.L. Brown ES
First Coast (P), Garden	Matthew Gilbert MS	Springfield MS
City ES, Highlands	Mattie V. Rutherford*	John Love ELC*
Estates	Mt. Herman Excpt. Ctr.	

**Participating Charter Schools:**

Biscayne High School Becoming Collegiate Seaside North

### Historic James Weldon Johnson Family Resource Center

Campus of James Weldon Johnson College Preparatory Middle School 3276  
Norman E. Thagard Blvd, Jacksonville, FL 32254 **Office:** 904-348-7578

**FSS Coordinator:** Michael Willis, [michaelw@uwnefl.org](mailto:michaelw@uwnefl.org)

**Participating Schools:**

Annie R. Morgan ES	Hyde Grove ES*	Ramona ES
Biltmore ES*	James W. Johnson (P)	Reynolds Lane ES
Central Riverside ES	Oak Hill ES	S.P. Livingston ES
Frank H. Peterson (P)	Palm Ave. Exp. Ctr.	Sadie Tillis ES (P)
Grand Park*	Paxon SAS (P)	Susie Tolbert ES (P)
Gregory Drive ES	Pickett ES	Thomas Jefferson ES
Hidden Oaks*	Pinedale ES	West Riverside ES
Hyde Park ES*	R. V. Daniels ES*	YWLA/YMLA Eugene Butler MS

**Participating Charter Schools:**

MycroSchool Wayman Academy Jax Classical

### Ribault Family Resource Center

Campus of Jean Ribault High School  
3701 Winton Drive, Jacksonville, FL 32208 **Office:** 904-390-4019

**FSS Coordinator:** StanVonna Gauden, [stanvonnag@uwnefl.org](mailto:stanvonnag@uwnefl.org)

**Participating Schools:**

Asa Philip Randolph	Northwestern Legends	Stanton College Prep
Dinsmore ES	Rufus E. Payne ES	The Bridge to Success at St Clair
George W. Carver ES	Rutledge Pearson ES(P)	The Bridge to Success at Henry F. Kite
Jean Ribault HS	S. A. Hull ES*	William Raines HS
Jean Ribault MS	Sallye B. Mathis ES*	

**Participating Charter Schools:**

Somerset Academy ES Somerset Academy MS Tiger Academy

### Sandalwood Family Resource Center

Campus of Sandalwood High School  
2750 John Prom Boulevard, Jacksonville, FL 32246 **Office:** 904-348-7553

**FSS Coordinator:** Angela Seabrooks, [angelas@uwnefl.org](mailto:angelas@uwnefl.org)

**Participating Schools:**

Abess Park ES	Kernan MS (P)	Sandalwood HS (P)
Alimacani ES	Kernan Trails ES	Southside Estates ES*
Atlantic Coast HS (P)	Landmark MS (P)	Twin Lakes ES
Bartram Springs ES (P)	Loretto ES (P)	Twin Lakes MS
Brookview ES	Mandarin HS	Windy Hill ES (P)
Crown Point ES	Mandarin MS	
Greenland Pines ES*	Mandarin Oaks ES	

**Participating Charter Schools:**

Seaside Community Charter  
River City Science Mandarin  
River City Science Intercoastal  
Cornerstone Classical

River City Science Ac SE  
San Jose Prep  
San Jose Prime  
FL Cyber  
Global Arts Charter

### Westside Family Resource Center

Campus of Jacksonville Heights Elementary School  
7750 Tempest Street South Jacksonville, FL 32244 **Office:** 904-390-3284

**FSS Coordinator:** Desirae George, [DesiraeG@uwnefl.org](mailto:DesiraeG@uwnefl.org)

**Participating Schools:**

Baldwin Middle/High (P)	Enterprise Learning	Ortega ES
Bayview ES*	Fishweir ES	Riverside HS (P)
Cedar Hills ES*	Jacksonville Heights ES	Ruth N. Upson ES
Chaffee Trail ES	John Stockton ES	Timucuan ES*
Chaffee Trail MS	Joseph Stillwell MS (P)	Venetia ES
Chimney Lakes ES	Lake Shore MS Mamie	Westside HS
Crystal Springs ES	Agnes ES Normandy	Westside MS
Edward White HS	Village ES	Westview K-8

**Participating Charter Schools:**

SOS Academy San Jose Early College

FSS PLUS Schools are required to have a full-time therapist on-site at each designated school. The PLUS School therapist will exclusively serve that school, rather than serving multiple schools (unless otherwise directed). Hazel Health Schools (\*) receive virtual services and are supported by external therapists.